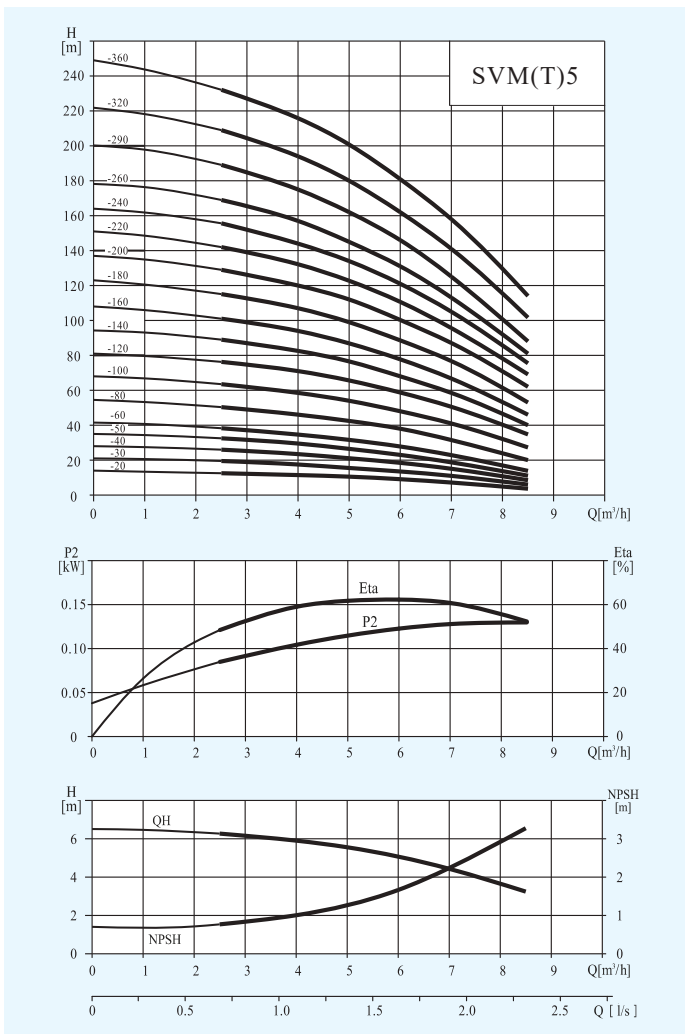


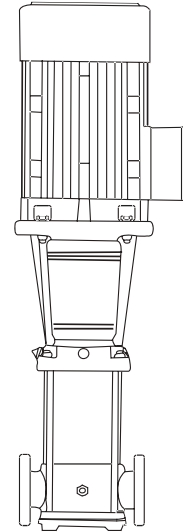
Stainless Steel Vertical Multistage Pump — 60Hz — SVM(T)5

Performance Curves

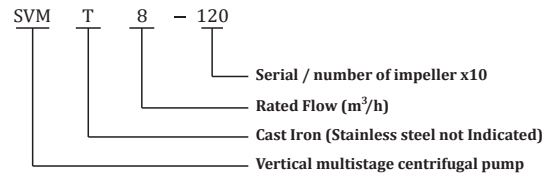


Model Description

SVM(T)1/2/3/4/5/8/10/12/15/16/20



SVM/VSMT

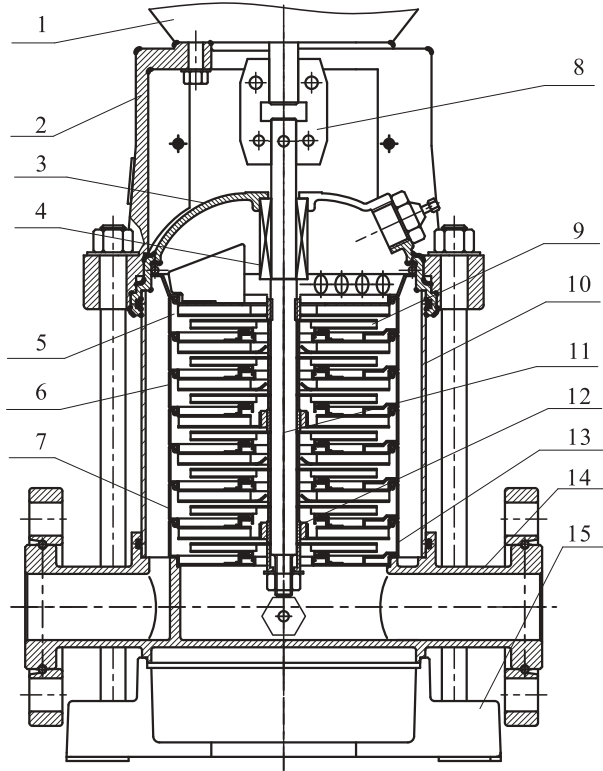


Size and weight

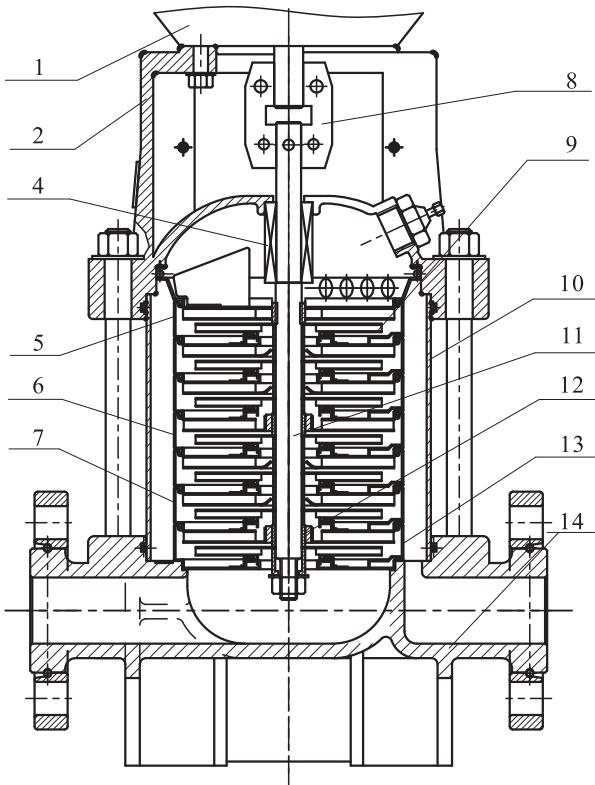
Model	Size (mm)					Weight (kg)
	B1	B2	B1+B2	D1	D2	
SVM5-20	276	230	506	148	117	22
SVM5-30	313	250	563	170	142	25
SVM5-40	340	250	590	170	142	27
SVM5-50	377	310	687	190	155	29
SVM5-60	404	310	714	190	155	29
SVM5-70	431	310	741	190	155	34
SVM5-80	458	310	768	190	155	34
SVM5-90	485	310	795	190	155	35
SVM5-110	549	350	899	197	165	42
SVM5-130	603	350	953	197	165	43
SVM5-140	630	360	990	230	185	50
SVM5-160	684	360	1044	230	185	51
SVM5-170	711	360	1071	230	185	51
SVM5-180	758	400	1158	260	210	66
SVM5-200	812	400	1212	260	210	66
SVM5-220	866	400	1266	260	210	67
SVM5-240	920	400	1320	260	210	73
SVM5-250	947	400	1347	260	210	73

Stainless Steel Vertical Multistage Pump — 60Hz — SVM(T)5

Structure chart:SVM(T)1/2/3/4/5



SVM



SVMT

Material:SVM(T)1/2/3/4/5

No	Description	Material	AISI/ASTM
1	Motor	Assembling unit	
2	Support	Cast Iron/ Ductile iron	ASTM25B ASTM70-50-05
4	Mechanical seal	Assembling unit	
5	Outlet guide vane	Stainless Steel	AISI304
6	Guide vane	Stainless Steel	AISI304
7	Support guide vane	Stainless Steel	AISI304
8	Coupling	Ductile iron	ASTM70-50-05
9	Impeller	Stainless Steel	AISI304
10	Shell	Stainless Steel	AISI304
11	Pump Shaft	Stainless Steel	AISI304 AISI316L
12	Bearing	Tungsten Carbide	
13	Inlet guide vane	Stainless Steel	AISI304
SVM			
3	seal seat	Stainless Steel	AISI304
14	Inlet & outlet seat	Stainless Steel	AISI304
15	Seat	Cast Iron	ASTM25B
SVMT			
14	Inlet & outlet seat	Cast Iron	ASTM25B