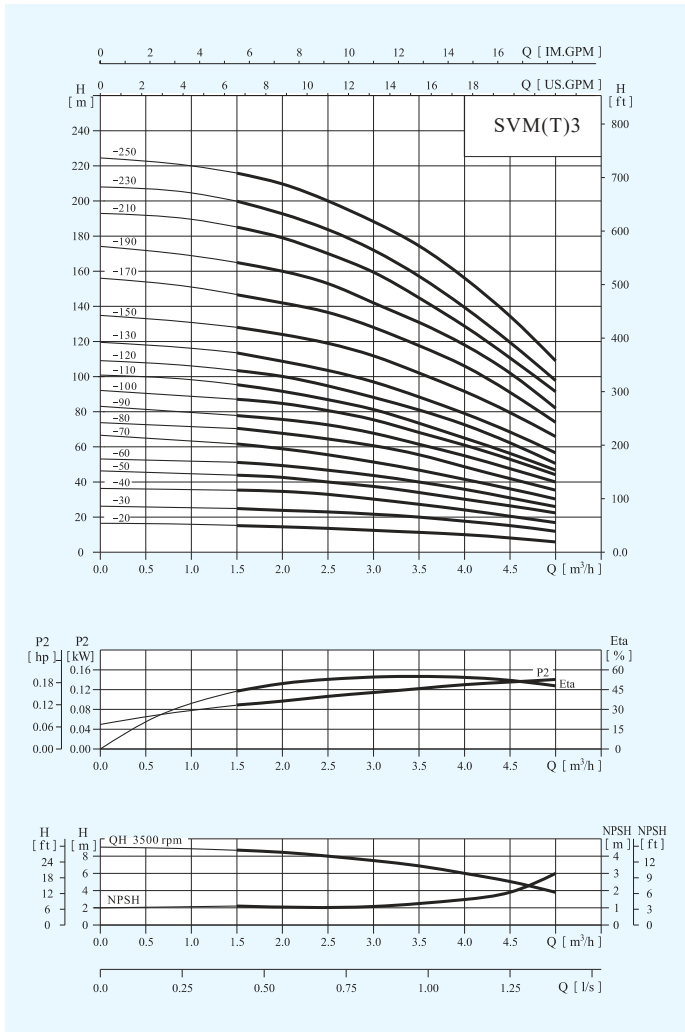


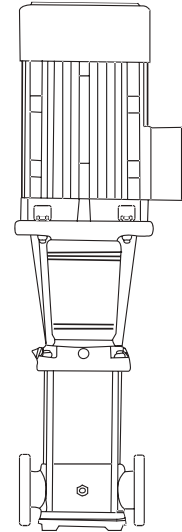
Stainless Steel Vertical Multistage Pump — 60Hz — SVM(T)3

Performance Curves

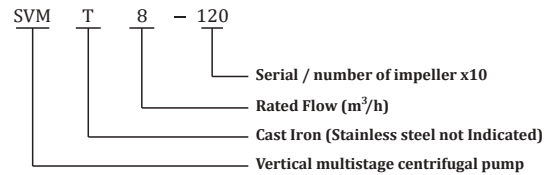


Model Description

SVM(T)1/2/3/4/5/8/10/12/15/16/20



SVM/SVMT



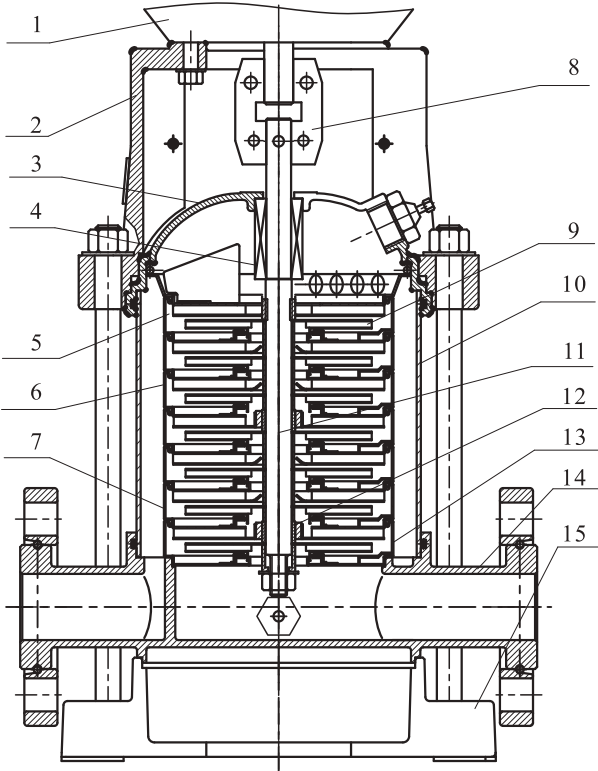
Size and weight

Model	Size (mm)					Weight (kg)
	B1	B2	B1+B2	D1	D2	
SVM3-20	258	210	468	148	117	20
SVM3-30	276	210	486	148	117	21
SVM3-40	294	210	504	148	117	22
SVM3-50	322	245	567	170	142	25
SVM3-60	340	245	585	170	142	26
SVM3-70	358	245	603	170	142	27
SVM3-80	376	245	621	170	142	27
SVM3-90	404	290	694	190	155	33
SVM3-100	422	290	712	190	155	34
SVM3-110	440	290	730	190	155	34
SVM3-120	458	290	748	190	155	37
SVM3-130	476	290	766	190	155	38
SVM3-150	512	290	802	190	155	39
SVM3-170	548	290	838	190	155	40
SVM3-190	594	315	909	197	165	48
SVM3-210	630	315	945	197	165	49
SVM3-230	666	315	981	197	165	50
SVM3-250	702	335	1037	230	188	58

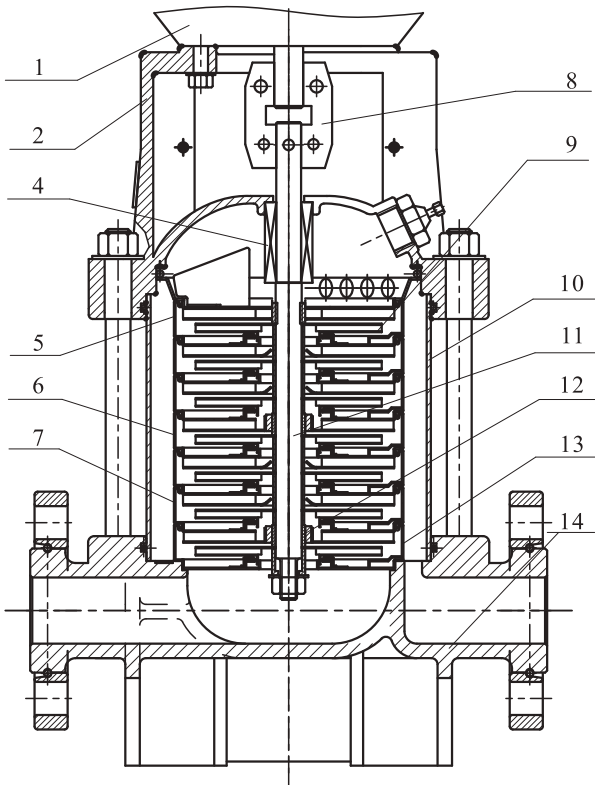
Stainless Steel Vertical Multistage Pump — 60Hz — SVM(T)3

Structure chart:SVM(T)1/2/3/4/5

Material:SVM(T)1/2/3/4/5



SVM



SVMT

No	Description	Material	AISI/ASTM
1	Motor	Assembling unit	
2	Support	Cast Iron/ Ductile iron	ASTM25B ASTM70-50-05
4	Mechanical seal	Assembling unit	
5	Outlet guide vane	Stainless Steel	AISI304
6	Guide vane	Stainless Steel	AISI304
7	Support guide vane	Stainless Steel	AISI304
8	Coupling	Ductile iron	ASTM70-50-05
9	Impeller	Stainless Steel	AISI304
10	Shell	Stainless Steel	AISI304
11	Pump Shaft	Stainless Steel	AISI304 AISI316L
12	Bearing	Tungsten Carbide	
13	Inlet guide vane	Stainless Steel	AISI304
SVM			
3	seal seat	Stainless Steel	AISI304
14	Inlet & outlet seat	Stainless Steel	AISI304
15	Seat	Cast Iron	ASTM25B
SVMT			
14	Inlet & outlet seat	Cast Iron	ASTM25B