

Stainless Steel Vertical Multistage Pump — SVM(T)200

Applications

- Water supply
- Industry pressure boosting
- Industry liquid transfer
- Water treatment
- Irrigation

Motor

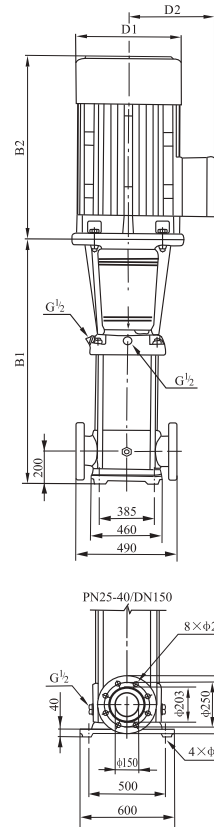
- Totally enclosed, air-cooled secondary standard motor
- Degree of protection: IP 55
- Insulation class: F
- Standard voltage: 1x220-230/240V (50Hz)
 - 3x200-220/346-380V
 - 3x220-240/380-415V
 - 3x220-255/380-440V
- Other voltage of the motor is available on request.
- Single phase motors from 0.37kW-2.2kW are available on request

Operation conditions

- Thin, clean, non-flammable and explosive and not containing solid particles or fibers liquid.
- Liquid Temperature:
 - Normal temperature: +15°C~+70°C
 - Hot water: -15°C~+105°C
- Environment Temperature: Max. 40°C
- Altitude: Max. 1000m

Material

- Inlet & outlet chamber: Cast iron/Stainless steel (304/316)
- Impeller: Stainless steel (304/316)
- Shell: Stainless steel (304/316)
- Shaft: Stainless steel (304/316)
- Coupling: Ductile iron
- Bearing: Tungsten carbide
- Mechanical seal: Tungsten Carbide / Graphite

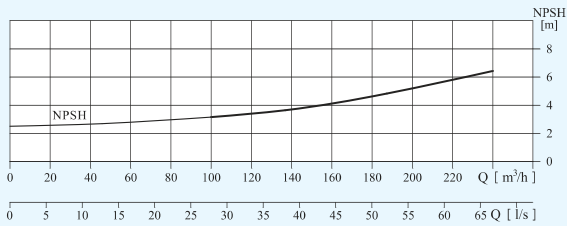
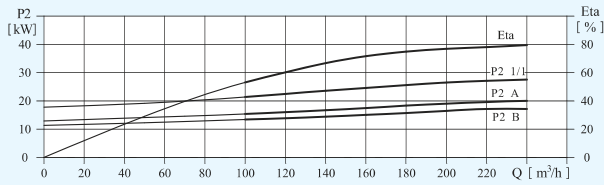
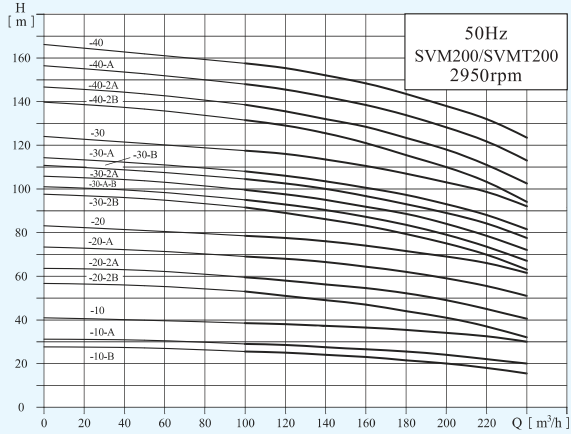


Performance Table

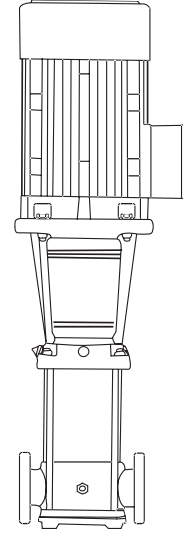
Model	Associated motor(kW)	Q (m ³ /h)	100	120	140	160	180	200	220	240
SVM200-10-B	18.5	H (m)	25.5	25	24	23	21.5	20	18	15.5
SVM200-10-A	22		29	28.5	27.5	26.5	25.5	24	22	20
SVM200-10	30		38.5	38	37.5	36.5	35	34	32.5	30
SVM200-20-2B	37		53	51	49	47	44	41	37	32
SVM200-20-2A	45		59.5	58	56	54	52.5	49	44.5	40.5
SVM200-20-A	55		69	68	66	64	62	59	55.5	51
SVM200-20	55		78.5	77.5	76	74	71.5	69	66	61.5
SVM200-30-2B	75		91.5	89	86.5	83.5	79	75	70	63
SVM200-30-A-B	75		95	93	90	87	83.5	79	73.5	67
SVM200-30-2A	75		99.5	97.5	94.5	91.5	89	84	78.5	72
SVM200-30-B	75		104.5	102.5	100	97	93	89	84.5	77.5
SVM200-30-A	75		108	106	103.5	100.5	97.5	93	88	81.5
SVM200-30	90		117.5	116	113.5	110.5	107	103	99	92
SVM200-40-2B	90		131.5	129	125.5	121	115.5	110	103.5	94
SVM200-40-2A	110		138.5	136	132	128	124	118	111	102.5
SVM200-40-A	110		148	145.5	142.5	138	134	128	122	113
SVM200-40	110	157.5	155.5	152.5	148	143.5	138	132.5	123.5	

Stainless Steel Vertical Multistage Pump — SVM(T)200

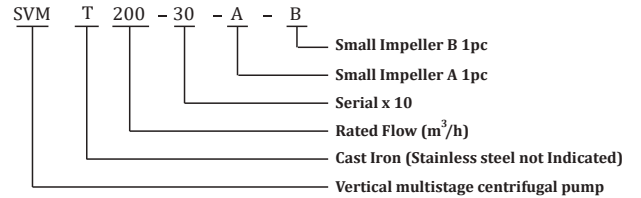
Performance Curves



Model Description SVM(T)200



SVM/SVMT

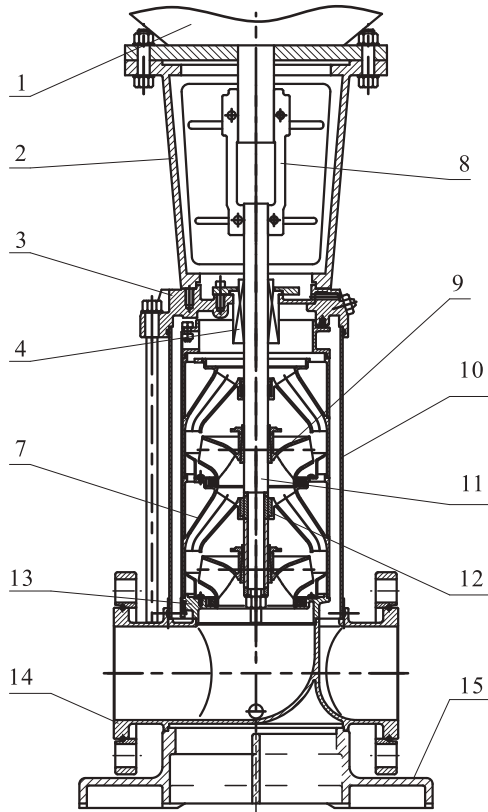


Dimension & Weight

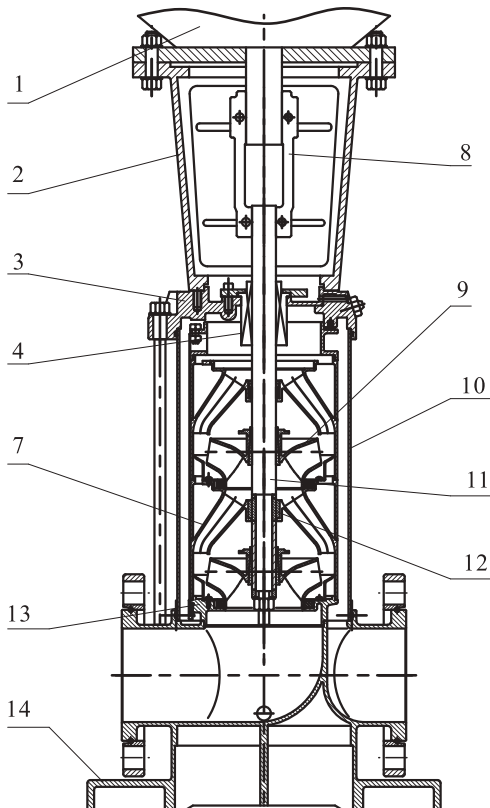
Model	Size (mm)					Net Weight (kg)
	B1	B2	B1+B2	D1	D2	
SVM200-10-B	907	550	1457	330	255	311
SVM200-10-A	907	575	1482	360	285	347
SVM200-10	907	650	1557	400	310	403
SVM200-20-2B	1101	650	1751	400	310	447
SVM200-20-2A	1101	685	1786	460	340	504
SVM200-20-A	1131	760	1891	540	370	595
SVM200-20	1131	760	1891	540	370	595
SVM200-30-2B	1325	845	2170	580	410	748
SVM200-30-A-B	1325	845	2170	580	410	748
SVM200-30-2A	1325	845	2170	580	410	748
SVM200-30-B	1325	845	2170	580	410	748
SVM200-30-A	1325	845	2170	580	410	748
SVM200-30	1325	895	2220	580	410	817
SVM200-40-2B	1519	895	2414	580	410	830
SVM200-40-2A	1519	1140	2659	645	550	1180
SVM200-40-A	1519	1140	2659	645	550	1180
SVM200-40	1519	1140	2659	645	550	1180

Stainless Steel Vertical Multistage Pump — SVM(T)200

Structure chart:SVM(T)120/150/200 Material:SVM(T)120/150/200



SVM



No	Description	Material	AISI/ASTM
1	Motor	Assembling unit	
2	Frame	Cast Iron/Ductile iron	ASTM25B ASTM70-50-05
4	Seal	Assembling unit	
7	Support guide vane	Stainless Steel	AISI304
8	Coupling	Ductile iron	ASTM7-50-05
9	Impeller	Stainless Steel	AISI304
10	Shell	Stainless Steel	AISI304
11	Pump Shaft	Stainless Steel	AISI304 AISI316L AISI431
12	Bearing	Tungsten Carbide	
13	Inlet guide vane	Stainless Steel	AISI304
SVM			
3	seal seat	Stainless Steel	AISI304
14	Inlet & outlet seat	Stainless Steel	AISI304
15	Seat	Ductile iron	ASTM70-50-05
SVMT			
3	seal seat	Ductile iron	ASTM70-50-05
14	Inlet & outlet seat	Cast Iron/Ductile iron	ASTM25B ASTM7-50-05