

Stainless Steel Vertical Multistage Pump — 60Hz — SVM(T)12

Applications

- Water supply
- Industry pressure boosting
- Industry liquid transfer
- Water treatment
- Irrigation

Motor

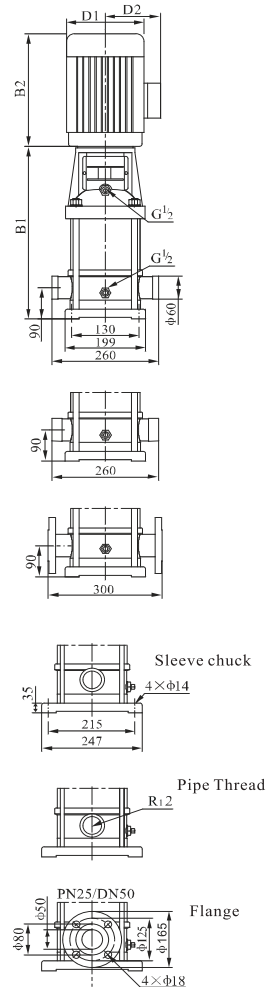
- Full - enclosed, air-blast two - pole standard motor
- Protection: IP 55
- Insulation class: F
- Standard voltage: 3x200-230/346-400V (60Hz)
 - 3x220-255/380-440V
 - 3x220-277/380-480V

Operation conditions

- Thin, clean, non-flammable and non - explosive liquid containing no solid granules and fibers.
- Liquid Temperature:
 - Normal temperature: +15°C~+70°C
 - Hot water: -15°C~+105°C
- Ambient Temperature: up to +40°C
- Altitude: up to 1000m

Material

- Inlet & outlet chamber: Cast iron/Stainless steel (304/316)
- Impeller: Stainless steel (304/316)
- Shell: Stainless steel (304/316)
- Shaft: Stainless steel (304/316)
- Coupling: Ductile iron
- Bearing: Tungsten carbide
- Mechanical seal: Tungsten Carbide / Graphite

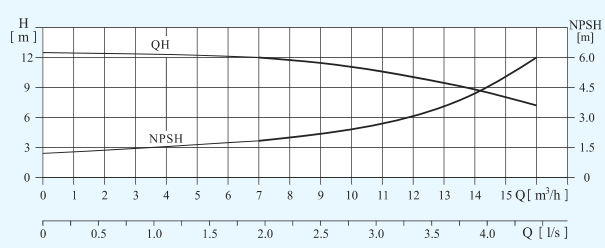
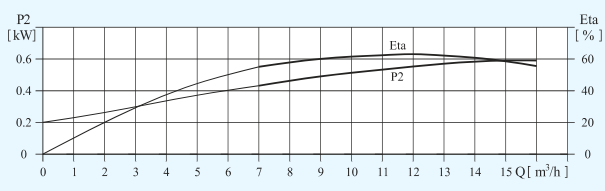
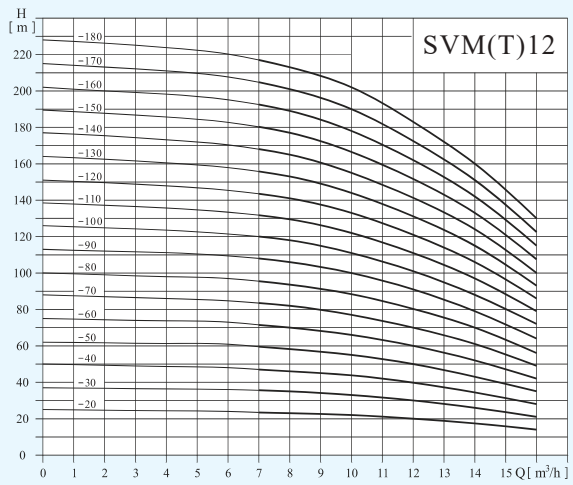


Performance table

Model	Driving motor		Q (m ³ /h)	7	9	11	12	13	15	17	19
	(kW)	(hp)									
SVM12-10	1.1	1.5		17	16	15	14.5	14	12.5	11	8.5
SVM12-20	2.2	3		35	34	32.5	32	30.5	27	24.5	20.5
SVM12-30	4	5.5		52.5	51.5	50	48	46	41.5	37.5	31
SVM12-40	5.5	7.5		70	68	65.5	64	61.5	55	49.5	41
SVM12-50	5.5	7.5		88	86	82	80	77	70	62	51
SVM12-60	7.5	10	H (m)	107	103	99	96	92	84	75	61
SVM12-70	7.5	10		124	121	116	112	107	97	88	71
SVM12-80	11	15		141	137	132	128	122	111	101	82
SVM12-100	11	15		178	173	166	161	153	140	128	104
SVM12-120	15	20		213	208	199	193	185	169	154	125
SVM12-140	15	20		249	242	233	225	216	198	180	145

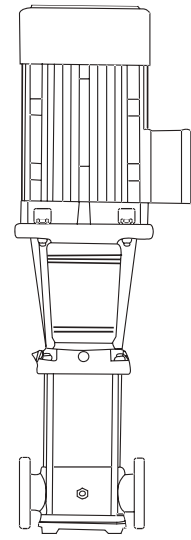
Stainless Steel Vertical Multistage Pump — 60Hz — SVM(T)12

Performance Curves

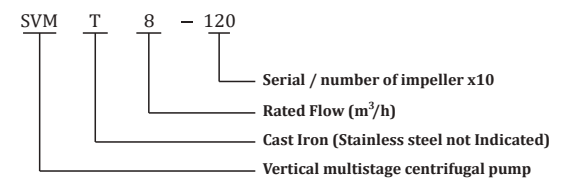


Model Description

SVM(T)1/2/3/4/5/8/10/12/15/16/20



SVM/SVMT

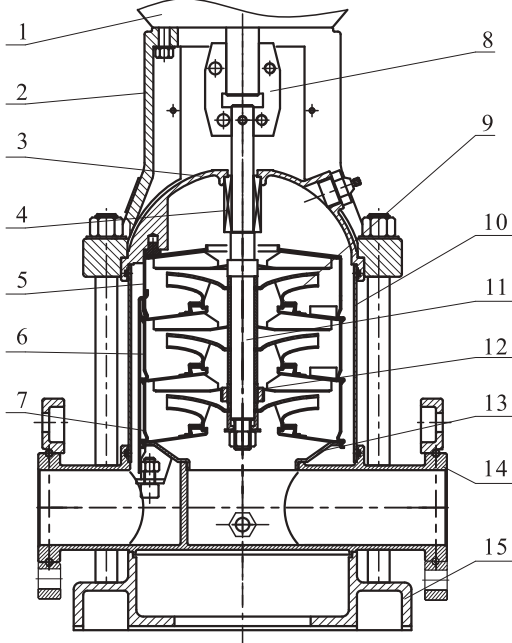


Size and weight

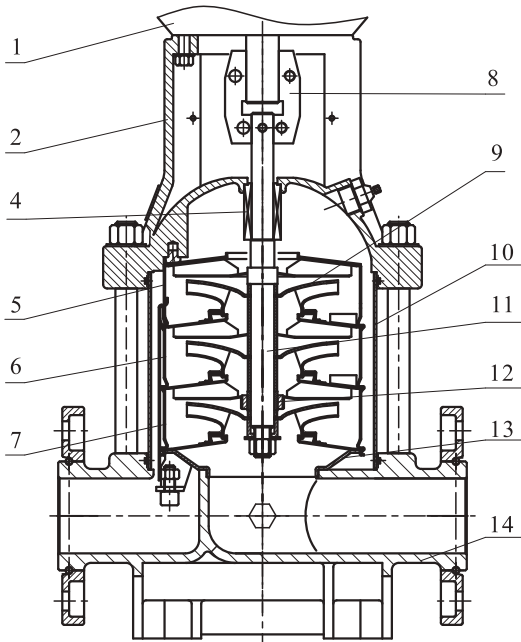
Model	Size (mm)					Weight (kg)
	B1	B2	B1+B2	D1	D2	
SVM12-10	357	245	602	170	142	32
SVM12-20	367	290	657	190	155	41
SVM12-30	407	335	742	230	188	56
SVM12-40	457	430	887	260	208	69
SVM12-50	487	430	917	260	208	71
SVM12-60	517	430	947	260	208	77
SVM12-70	547	430	977	260	208	78
SVM12-80	665	490	1155	330	255	147
SVM12-100	725	490	1215	330	255	151
SVM12-120	785	490	1275	330	255	164
SVM12-140	845	490	1335	330	255	167

Stainless Steel Vertical Multistage Pump — 60Hz — SVM(T)12

Structure chart: SVM(T)8/10/12/15/16/20



SVM



SVMT

Material:SVM(T)8/10/12/15/16/20

No	Description	Material	AISI/ASTM
1	Motor	Assembling unit	
2	Support	Cast Iron/ Ductile iron	ASTM25B ASTM70-50-05
4	Mechanical seal	Assembling unit	
5	Outlet guide vane	Stainless Steel	AISI304
6	Guide vane	Stainless Steel	AISI304
7	Support guide vane	Stainless Steel	AISI304
8	Coupling	Ductile iron	ASTM70-50-05
9	Impeller	Stainless Steel	AISI304
10	Shell	Stainless Steel	AISI304
11	Pump Shaft	Stainless Steel	AISI304 AISI316L
12	Bearing	Tungsten Carbide	
13	Inlet guide vane	Stainless Steel	AISI304
SVM			
3	seal seat	Stainless Steel	AISI304
14	Inlet & outlet seat	Stainless Steel	AISI304
15	Seat	Cast Iron	ASTM25B
SVMT			
14	Inlet & outlet seat	Cast Iron	ASTM25B