



G PUMP

Vertical Multistage Centrifugal Pump — SVH | SVHT 190

Applications

Water supply

- Water filter
- Supercharging
- Pressurization of hotels
- Industrial pressurization

Industrial boosting

- Cleaning system
- High pressure flushing system
- Firefighting system
- Car cleaning equipment

Industrial liquid transport

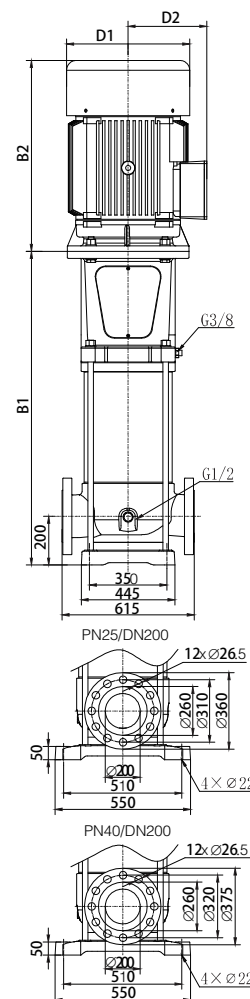
- Cooling air conditioning system
- Boiler feed water
- Condensing system and cooling tower
- Machine tool cooling lubrication system

Water treatment

- Ultrafiltration system
- Reverse osmosis system
- Distillation system
- Separator
- Swimming pool

Irrigation

- Regional irrigation
- Sprinkler irrigation
- Drip irrigation
- Greenhouse irrigation



Dimensions and Weight

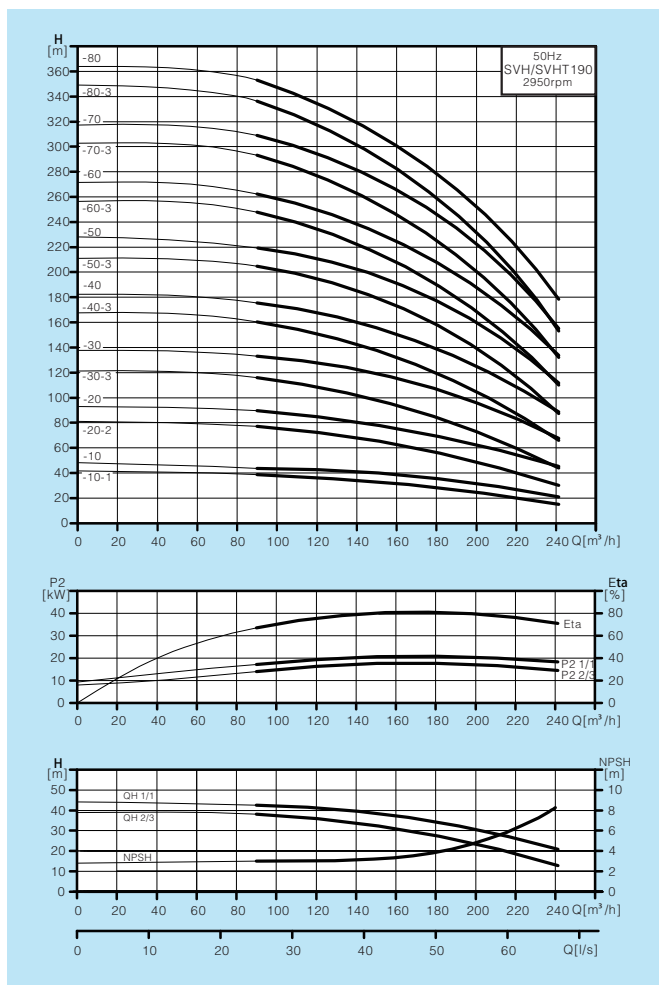
Model	Dimension (mm)					Weight (kg)
	B1	B2	B1+B2	D1	D2	
SVH190-10-1	854	640	1494	350	260	316
SVH190-10	854	670	1524	360	285	345
SVH190-20-2	986	670	1656	360	285	441
SVH190-20	1006	740	1746	460	340	513
SVH190-30-3	1140	820	1960	550	370	628
SVH190-30	1140	870	2010	580	410	742
SVH190-40-3	1268	870	2138	580	410	756
SVH190-40	1268	920	2188	580	410	804
SVH190-50-3	1420	1060	2480	660	550	1210
SVH190-50	1420	1060	2480	660	550	1210
SVH190-60-3	1548	1225	2773	660	550	1259
SVH190-60	1548	1225	2773	660	550	1259
SVH190-70-3	1676	1225	2901	660	550	1333
SVH190-70	1676	1225	2901	660	550	1333
SVH190-80-3	1804	1380	3184	660	550	1442
SVH190-80	1804	1380	3184	660	550	1442



G PUMP

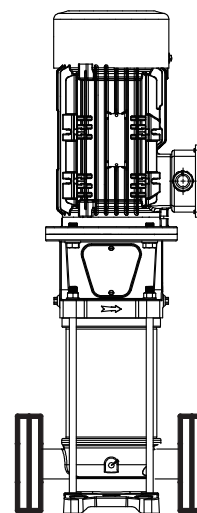
Vertical Multistage Centrifugal Pump — SVH | SVHT 190

Performance cruve

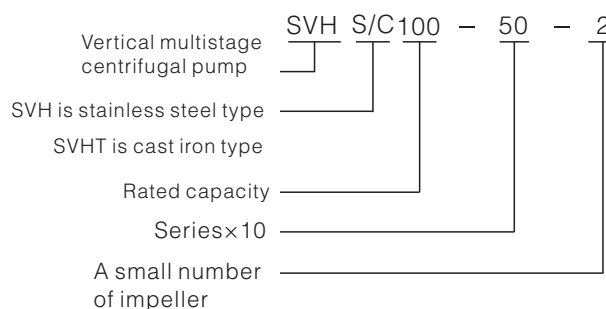


Model Specification

SVH, SVHT100/130/160/190



SVH / SVHT

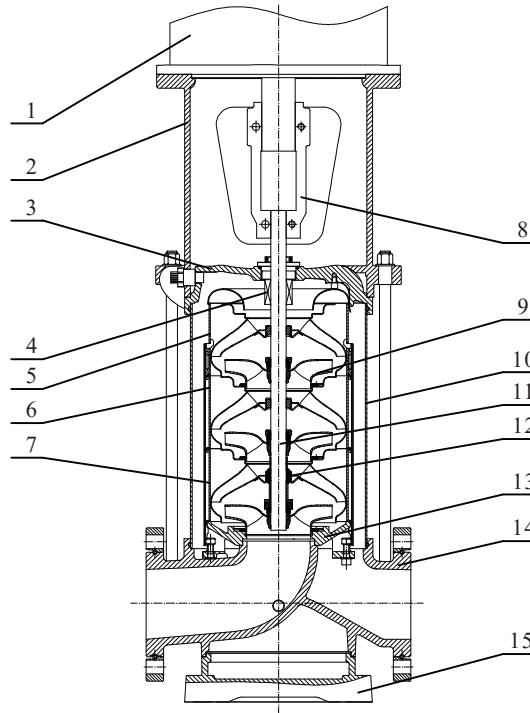


Performance data

Model	Power(kW)	Q (m³/h)	90	120	140	160	180	190	200	220	240
SVH190-10-1	18.5	H (m)	39	37	34	32	29	27	25	20	15
SVH190-10	22		45	42	39	37	35	33	31	28	23
SVH190-20-2	37		76	72	68	63	57	53	48	40	31
SVH190-20	45		87	83	79	74	69	66	62	55	45
SVH190-30-3	55		115	109	102	95	85	79	73	60	43
SVH190-30	75		132	126	120	113	105	99	94	82	68
SVH190-40-3	75		159	151	142	131	119	112	105	87	66
SVH190-40	90		175	168	160	151	139	131	125	110	90
SVH190-50-3	110		204	193	183	171	156	147	137	116	89
SVH190-50	110		219	211	202	189	175	167	157	136	113
SVH190-60-3	132		248	236	224	209	190	179	167	141	112
SVH190-60	132		263	253	242	228	210	199	189	164	135
SVH190-70-3	160		292	279	266	248	226	212	200	169	134
SVH190-70	160		308	295	283	267	246	232	220	191	156
SVH190-80-3	200		336	321	306	286	260	247	231	198	155
SVH190-80	200		350	338	323	305	280	267	252	218	179

Vertical Multistage Centrifugal Pump — SVH | SVHT 190

Structure SVH / SVHT 100,130,160,190



Materials SVH / SVHT 100,130,160,190

No.	Spare parts	Materials		GB		EN DIN		AISI/ASTM	
		SVHT	SVH	SVHT	SVH	SVHT	SVH	SVHT	SVH
1	Motor	/		/		/		/	
2	Bracket	Ductile cast iron		GB 1348-QT500-7		EN 1563 EN-GJS-500-7		ASTMA53665-45-12	
3	Seal base	Ductile cast iron /Stainless steel		GB1348-QT500-7 /GB/T20878-06Cr19Ni10		EN 1563 EN-GJS-500-7 /EN 10088-1.4301		ASTM A536 65-45-12 /AISI304	
4	Mechanical seal	/		/		/		/	
5	Top diffuser	Stainless steel		GB/T20878-06Cr19Ni10		EN 10088-1.4301		AISI304	
6	Diffuser	Stainless steel		GB/T20878-06Cr19Ni10		EN 10088-1.4301		AISI304	
7	Support diffuser	Stainless steel		GB/T20878-06Cr19Ni10		EN 10088-1.4301		AISI304	
8	Coupling	Ductile cast iron		GB 1348-QT500-7		EN 1563 EN-GJS-500-7		ASTMA53665-45-12	
9	Impeller	Stainless steel		GB/T20878-06Cr19Ni10		EN 10088-1.4301		AISI304	
10	Cylinder	Stainless steel		GB/T20878-06Cr19Ni10		EN 10088-1.4301		AISI304	
11	Shaft	Stainless steel		GB/T20878-06Cr19Ni10		EN 10088-1.4301		AISI304	
12	Bearing	WC/SiC		/		/		/	
13	Inducer	Stainless steel		GB/T20878-06Cr19Ni10		EN 10088-1.4301		AISI304	
14	Intel&outlet chamber	Ductile castiron /Stainless steel		GB1348-QT500-7 /GB/T20878-06Cr19Ni10		EN 1563 EN-GJS-500-7 /EN 10088-1.4301		ASTM A536 65-45-12 /AISI304	
15	Base	Ductile castiron		GB 1348-QT500-7		EN 1563 EN-GJS-500-7		ASTM A536 65-45-12	