

Stainless Steel Horizontal Multistage Pump — 60Hz — SHM(T)8

Applications

- Air-conditioning system
- Cooling system
- Washing and cleaning system
- Water treatment
- Aquaculture
- Fertilizing / metering system
- Environmental application

Motor

- Fitted with a totally enclosed, fan-cooled
- Enclosure class: IP 55
- Insulation class: F
- Standard voltage: 1x220-230/240V (50Hz) 3x200-220/346-380V 3x220-240/380-415V 3x220-255/380-440V

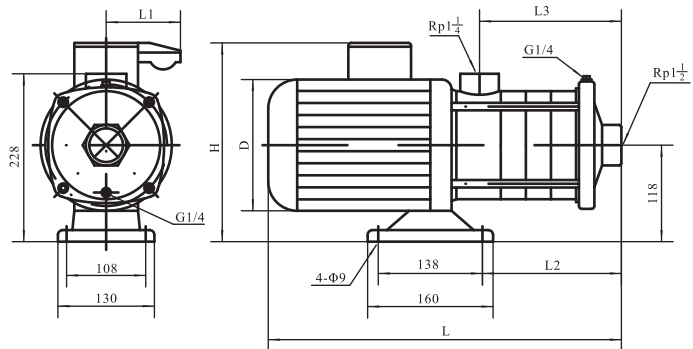


Operation conditions

- Liquid Temperature: Normal temperature: -15°C~+70°C Hot water: -15°C~+105°C
- Environment Temperature: Max. 40°C
- Altitude: Max. 1000m
- Operation pressure: Max. 10 bar

Material

- Inlet & outlet chamber: Cast iron/Stainless steel (304/316)
- Impeller: Stainless steel (304/316)
- Shell: Stainless steel (304/316)
- Shaft: Stainless steel (304/316)
- Mechanical seal: Graphite / SIC

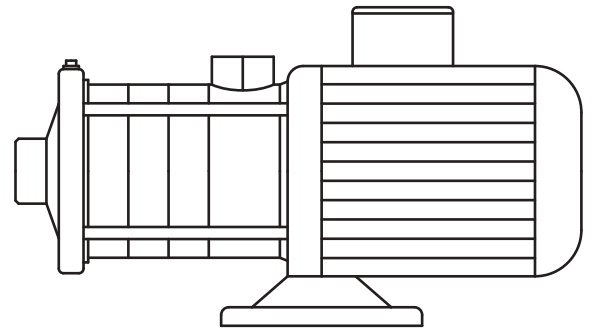
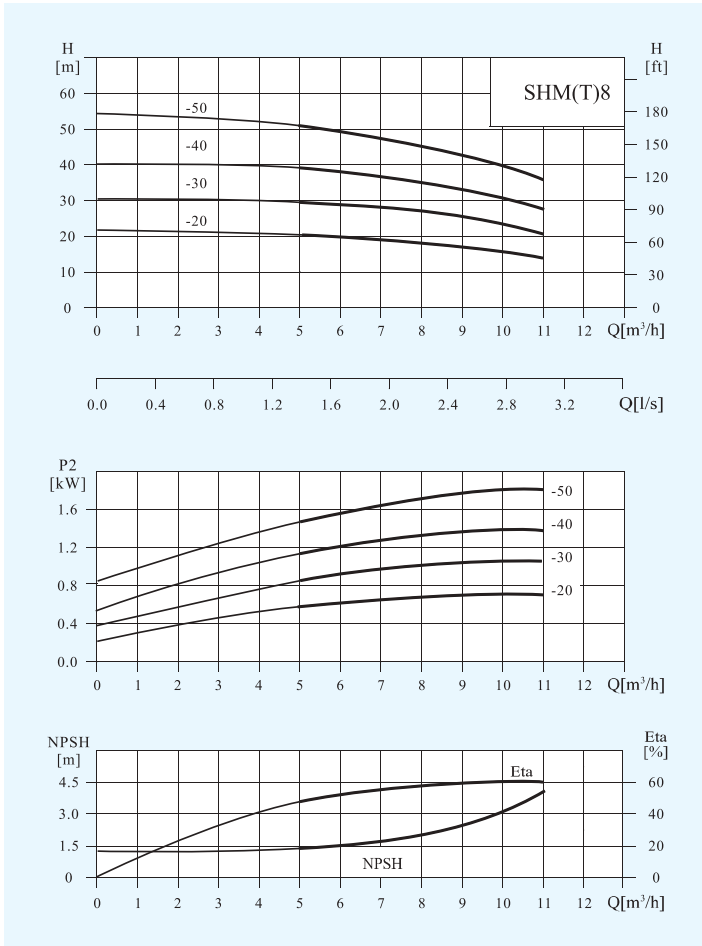


Performance table

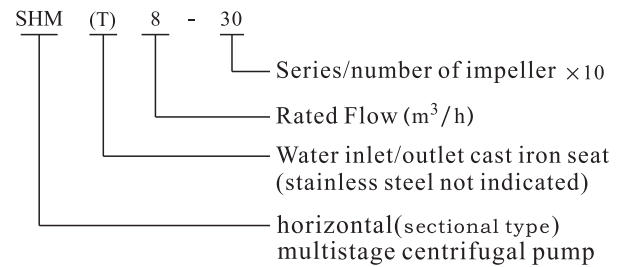
Model	Driving motor		Q (m ³ /h)	6	7	8	9	10	11	12	13
	(kW)	(hp)									
SHM8-10	0.75	1		14	13	12	11.5	11	10	9	8
SHM8-20	1.5	2		27	26	25	24	23	21	19	16
SHM8-30	2.2	3	H (m)	41	40	39	37	34	33	29	25
SHM8-40	3	4		55	54	52	50	45	43	39	33
SHM8-50	3	4		69	67	65	62	55	53	49	40

Stainless Steel Horizontal Multistage Pump — 60Hz — SHM(T)8

Performance Curves



SHM/SHMT

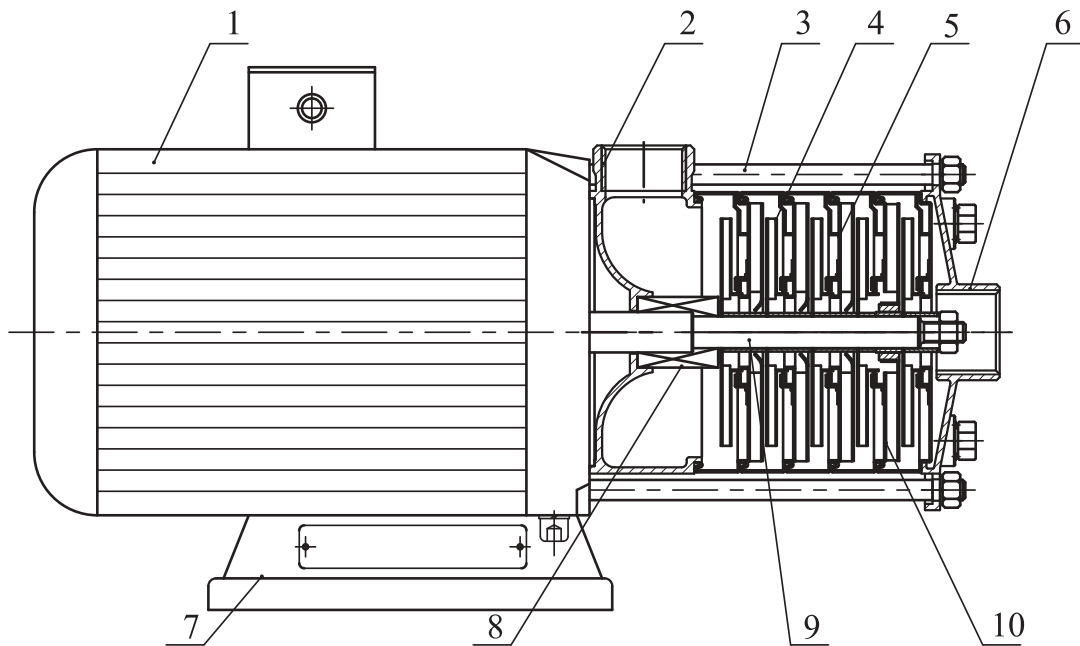


Size and weight

Motor	Model	Size (mm)								Weight (kg)
		L1	L2	L3	E	H	N	D	K	
Three-phase/ single-phase	SHM8-10	395	128	108	227	230/265	117	170	/100	22
	SHM8-20	430	128	108	228	240/270	118	170	/100	25
	SHM8-30	460	158	138	228	240/270	118	170	/100	27
	SHM8-40	550	188	168	238	270/	128	195		32
	SHM8-50	580	218	198	238	270/	128	195		32

Stainless Steel Horizontal Multistage Pump — 60Hz — SHM(T)8

Structure chart:SHM



Material SHM

No.	Name	Material	AISI / ASTM
1	Suction	Stainless steel	AISI304
2	Plug	Stainless steel	AISI304
3	Bearing	Tungsten carbide	
4	Impeller	Stainless steel	AISI304
5	Shaft	Stainless steel	AISI304
7	Discharge	Stainless steel	AISI304
8	Mechanical seal		
9	Motor end cover	Aluminum alloy	
10	Base plate	Cast iron	ASTM25B
11	Staybolt	Stainless steel	AISI304
12	Diffuser	Stainless steel	AISI304
13	Support diffuser	Stainless steel	AISI304
14	Impeller sleeve	Stainless steel	AISI304